

4KPROIP-CBS



SDVOE

4KPROIP-CBS delivers uncompressed, zero latency, digital video signals at up to 4k resolution, using standard Ethernet infrastructure. Based on the award winning chip set, this revolutionary technology takes digital video signal management into the future.

4KPROIP-CBS is built for the Pro AV industry to satisfy the demands of routing hi-resolution 4K video to multiple destinations with every pristine detail of the original source. Audio, analog and embedded are catered for with embedding and de-embedding features. RS232 and IR control are also routed along side the video signal.

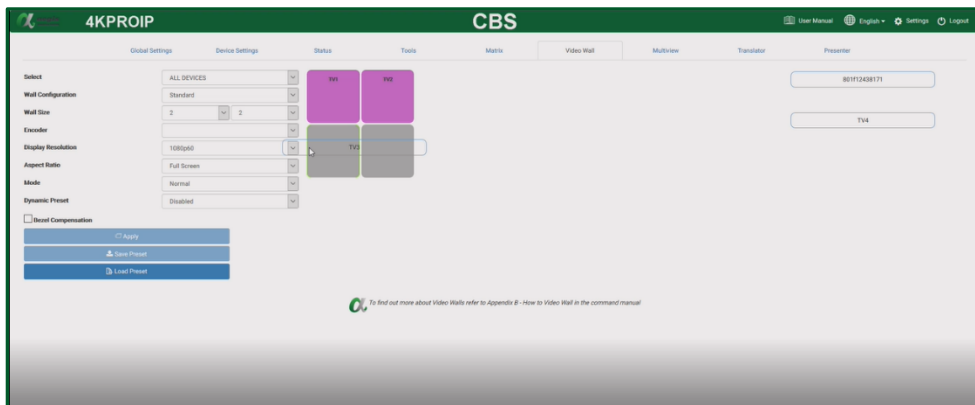
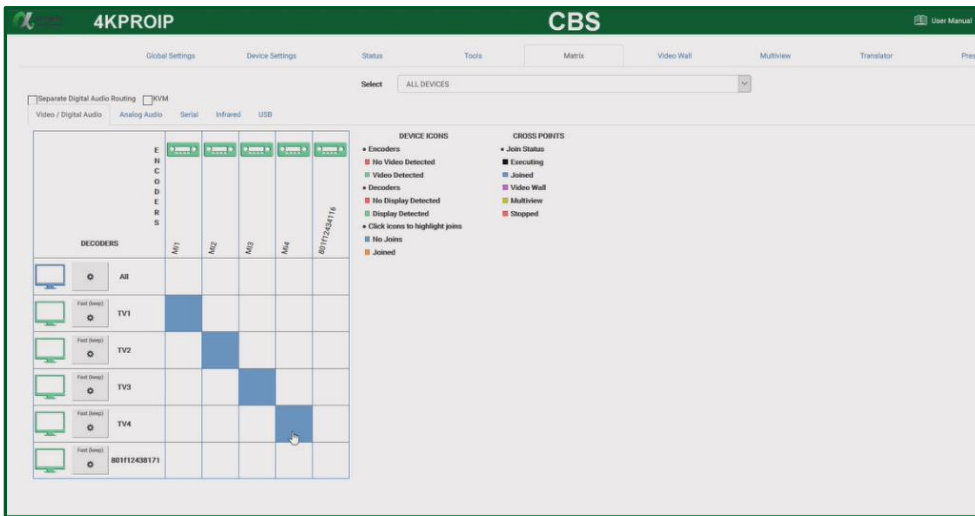
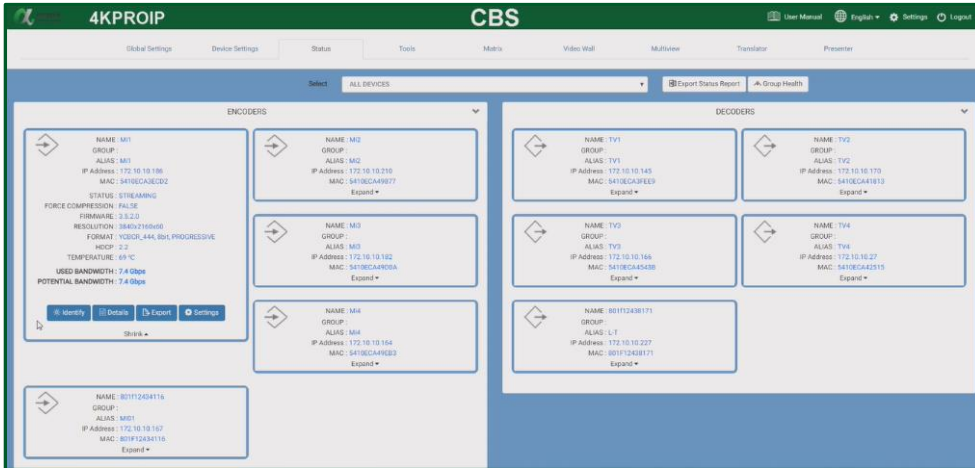
A particular integrator friendly feature is complete break away switching of all signal types, video, audio, RS232 and IR, these can be routed independently to any destination.

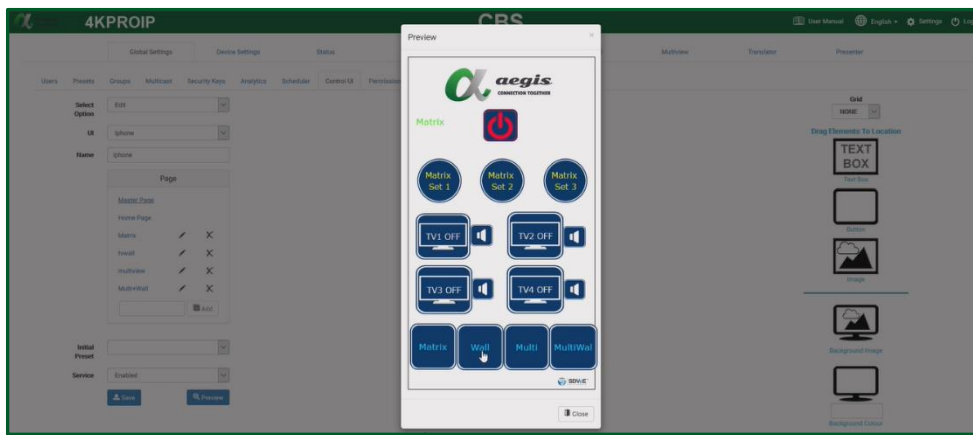
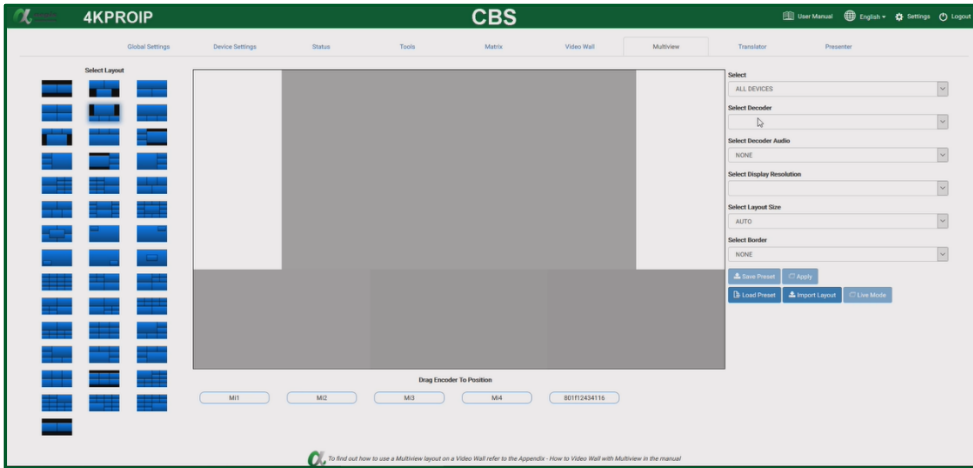
Scalable matrix switchers of any size can easily created, so you only pay for what you need and ensure any future expansion can be accommodated.

Product Description

- **Superior technology with Zero frame latency**
 - Picture perfect image reproduction with identical timing
- **Complete and independent audio, video and control matrix switching**
 - Handles all typical signals found in Pro AV environment
- **Unmatched I/O flexibility, one end point per source/display**
 - Free yourself from fixed matrix sizes forever
- **HDCP compliant**
 - AES 128bit encrypted video delivery of protected content
- **Video distribution using off the shelf 10GbE network switches**
 - Trusted performance from switch companies like Cisco and Netgear
- **Seamless switching**
 - The only technology that can truly handle it
- **4K 60 HDR**
 - The only technology that can truly handle it
- **Built in broadcaster scaler**
 - Accept and display any resolution to match all your displays

- **Distributed video matrix with built in redundancy**
 - No more centralized matrix frame to fail, only end points to hot swap out, no system down time
- **Multi View**
 - Display up to 32 images for high res 4K video collaboration





4KPROIP-CBS Technical Specifications

Video Interfaces	HDMI 2.0 / HDMI 1.4 / DVI 2.0 Pixel clock up to 594 MHz
Video Resolutions	All SD, HD, and other resolutions up to <ul style="list-style-type: none"> • 4K / 60Hz / RGB and 4:4:4 8 bit • 4K / 60Hz / 4:2:2 10 bit (HDR) • 4K / 60Hz / 4:2:0 10 bit (HDR)
Audio Interfaces	All audio formats supported by HDMI 1.4 and HDMI 2.0, including: LPCM, Dolby Digital/Plus/EX, Dolby True HD, DTS, DTS-EX, DTS-96/24, DTS High Res, DTS-HD Master Audio, DSD I2S stereo input and output up to 48 kHz 24-bit
Control Interfaces	<ul style="list-style-type: none"> • RS-232 (up to 115.2 kbaud) • Infrared • USB 2.0 (full device support, up to 480 Mbps) with 3rd

	<p>party chipset</p> <ul style="list-style-type: none"> • Gigabit Ethernet
Transmission Interfaces	10 Gigabit XFI, IEEE 802.3 (RJ45 and SFP+)
Transmission Distance (Category Cable)	<ul style="list-style-type: none"> • Up to 100 meters on CAT6A or better for 4K / 60 Hz / 4:4:4 video • Up to 55 meters on CAT6 or better for 4K / 30 Hz / 4:4:4 video • Cat-X support requires a 3rd party 10GBaseT PHY
Transmission Distance (fiber)	<p>Interchangeable, field replaceable SFP+ modules</p> <ul style="list-style-type: none"> • Up to 300/550 meters with multi-mode OM3/OM4 fiber • Up to 30 km with single-mode fiber
Digital Content Protection AV Processing Technology	<p>HDCP 1.2 / HDCP 2.2 Compatible</p> <p>AptoVision Plethora• Broadcast quality up-scaling and downscaling</p> <ul style="list-style-type: none"> • Colorspace and frame-rate conversion • Multi-source video compositing • Ultra-light compression, lossless for most content • Audio embedding and de-embedding • Audio down-mixing and re-sampling • Video-splitting and bezel correction
Synchronization Technology	AptoVision ACR (Automatic Clock Recovery)
Multi-Signal Streaming Technology	<p>BlueRiver Channel Coder</p> <ul style="list-style-type: none"> • Encoding multiple native signals into IP streams • Decoding IP streams into multiple native signals • Bidirectional, 10Gbps
Encryption	AES-128
General	
Operating Temperature	0°C ~ +45°C (+32°F ~ +113°F), 10% to 90%, non-condensing
Storage Temperature	-20°C ~ +70°C (-4°F ~ +158°F), 10% to 90%, non-condensing

Humidity	10% to 90%, noncondensing
Product Weight	~1.5 Kg
Power Supply	12V DC
Power Consumption	15.24 W 16.24 W
Transport Distance	30m with Cat6 cable 100m with Cat6a cable 100m with Cat7 cable
Dimensions	139mm x 210mm x 35mm (L x W x H)
ESD Protection	Human-body Model: $\pm 8\text{kV}$ (Air-gap discharge)/ $\pm 4\text{kV}$ (Contact discharge)