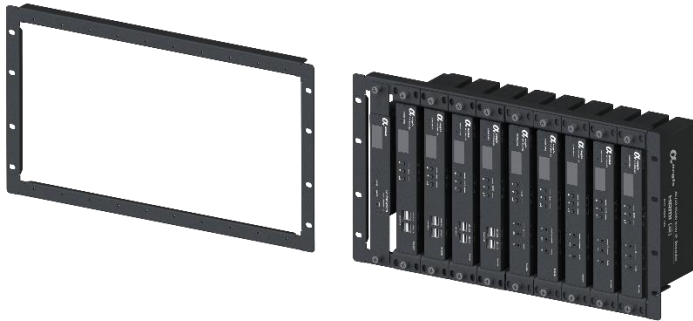


Rack-1003

6U Rack Mount Shelf

(For AVP-EN/DE6K-102)

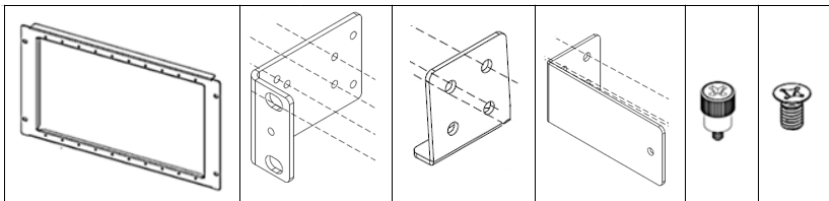


Description:

This 6U rack can accommodate up to 10 AV over IP devices, providing a convenient and organized installation solution. Supported devices are listed in the table below.

Control box	AVP-CBS2K-101
6K Series	AVP-DE6K-102
	AVP-EN6K-102

Package contents :



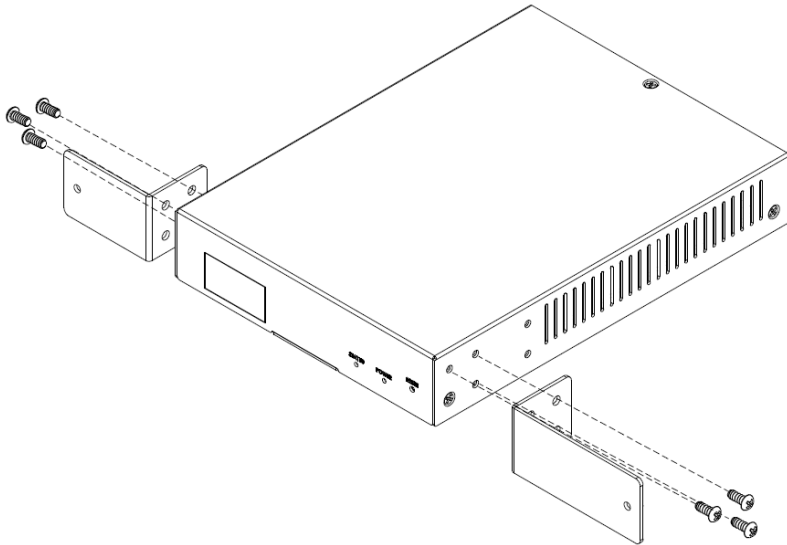
※**Note:** Front panel bracket A is available in both 2K、4K and 6K series.

Product dimensions:

W x H x D: 483mm x 265.9mm x 20mm (19.0" x 10.4" x 0.78")

Installation steps:

Step 1. Remove the screws from both sides of the CBS device housing and lock the hanging ears.



Step 2. Install the device with the secured brackets into the rack frame and fix it in the cabinet using the front panel screws.

