



Edge Core Network Switch ECS2100 Series

Quick Setup Guide

Version: 20240919

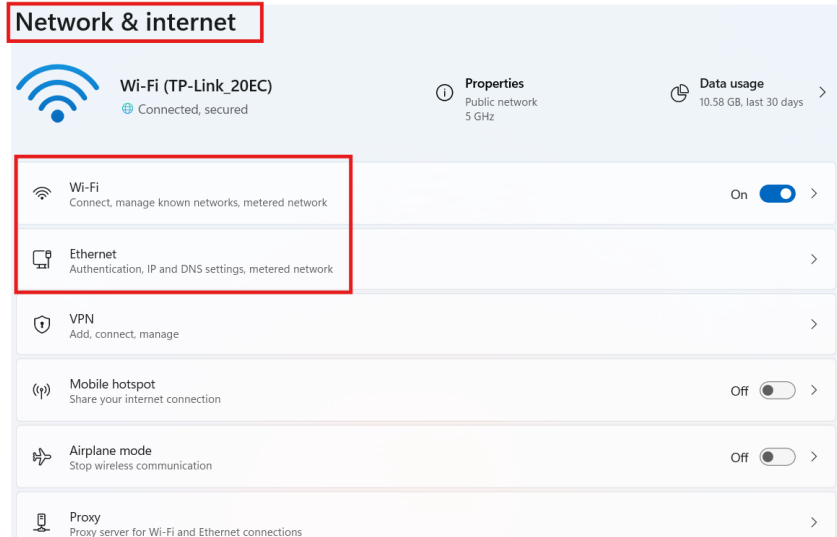
Table of Contents

Modify computer IP address	2
Windows IP Setup.....	2
MAC IP Setup	4
Switch Requirement	5
Feature explanation.....	6
Connecting to the switch Web GUI Interface	6
Configuration Jumbo Frame.....	7
Configure IGMP Snooping	7
Configure Vlan IGMP	8

Modify computer IP address

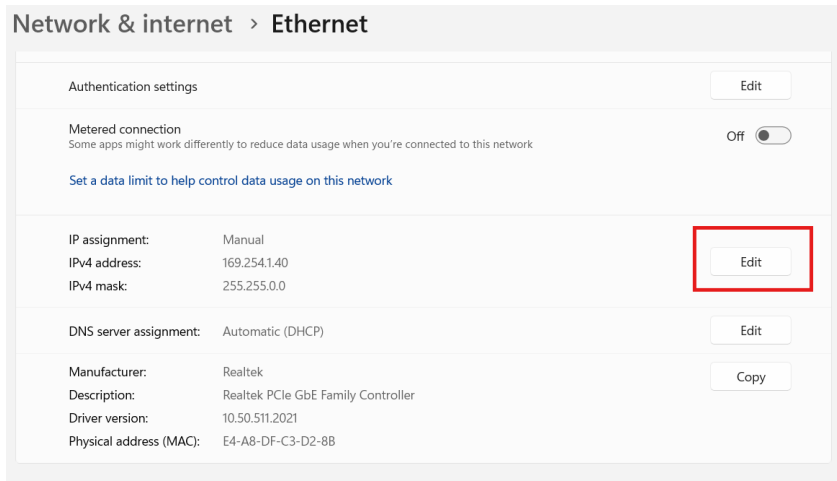
Windows IP Setup

1. Connect the PC to network setting (Windows 11)
2. Go to Network & Internet and select Ethernet or Wi-Fi



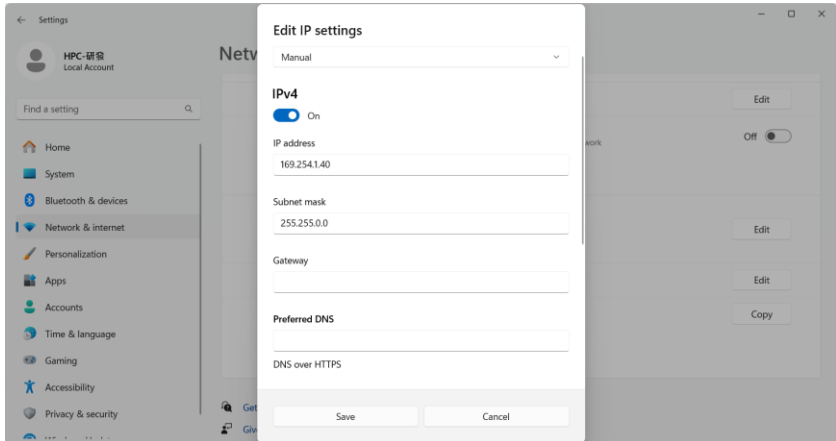
The screenshot shows the Windows 'Network & internet' settings page. The 'Network & internet' title is highlighted with a red box. Below it, the 'Wi-Fi (TP-Link_20EC)' section is shown as 'Connected, secured'. The 'Properties' section shows 'Public network' and '5 GHz'. The 'Data usage' section shows '10.58 GB, last 30 days'. Below these are several network options: 'Wi-Fi' (On), 'Ethernet' (highlighted with a red box), 'VPN', 'Mobile hotspot' (Off), 'Airplane mode' (Off), and 'Proxy'.

3. Go to Ethernet and Edit



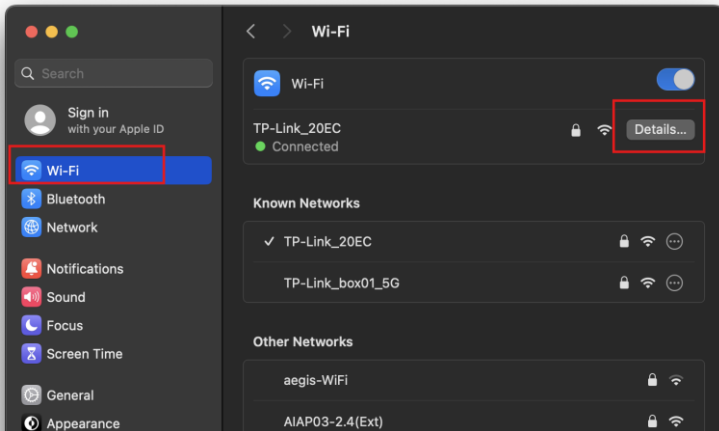
The screenshot shows the Windows 'Ethernet' settings page. The 'Authentication settings' section has an 'Edit' button. The 'Metered connection' section is 'Off' and has a link to 'Set a data limit to help control data usage on this network'. The 'IP assignment' section shows 'Manual' assignment with 'IPv4 address: 169.254.1.40' and 'IPv4 mask: 255.255.0.0'. The 'Edit' button in this section is highlighted with a red box. The 'DNS server assignment' section is 'Automatic (DHCP)' with an 'Edit' button. The bottom section shows hardware details: 'Manufacturer: Realtek', 'Description: Realtek PCIe GbE Family Controller', 'Driver version: 10.50.511.2021', and 'Physical address (MAC): E4-A8-DF-C3-D2-8B' with a 'Copy' button.

4. Select IP setting From DHCP to Manual and setup IP Address to make sure with the same subnet as switch

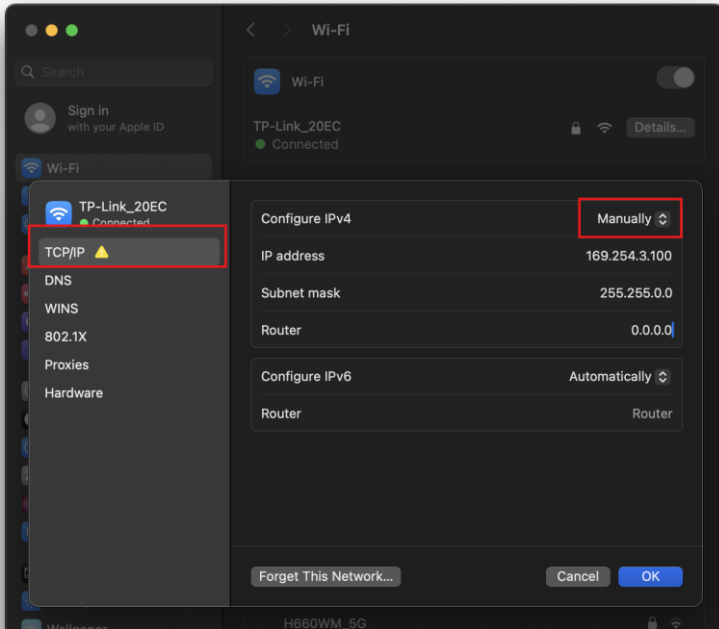


MAC IP Setup

1. Connect the Mac to network switch via Ethernet or Wifi
2. Go to Wifi / Ethernet interface and select detail



3. Go to TCP/IP and Select Configure IPV4 from DHCP to Manually. Setup IP Address to make sure with the same subnet as switch



Switch Requirement

The following features need to be enabled on the network switch being used for a Switch

1. Multicast
2. Jumbo Frames / Frame Size / MTU over 9000
3. IGMP Management / Snooping
4. PoE (where being utilised)

Feature explanation

- **Multicast** : (one-to-many or many-to-many distribution) is a group communication where information is addressed to a group of network devices simultaneously
- **Jumbo Frames / Frame Size / MTU** : are Ethernet frames with more than 1,500 bytes of payload. Conventionally, jumbo frames can carry up to 9,216 bytes of payload and must be activated in order to send large packets of data for HDMI distribution
- **IGMP Management / Snooping** : Internet Group Management Protocol (IGMP) snooping is a feature that allows switches to intelligently forward multicast traffic to avoid broadcasting the traffic to all ports to improve network performance..
- **POE** : (Power over Ethernet) devices are all capable of being powered by PoE. Power Supply Units are available for devices, however, the products are not sold with these included. PoE can be disabled on the switch if external PSU's are being used

Connecting to the switch Web GUI Interface

1. Open your internet browser (Google Chrome, Mozilla, Internet Explorer etc)
2. Type the network switch default IP address into the web browser bar
3. Enter the default user name and password

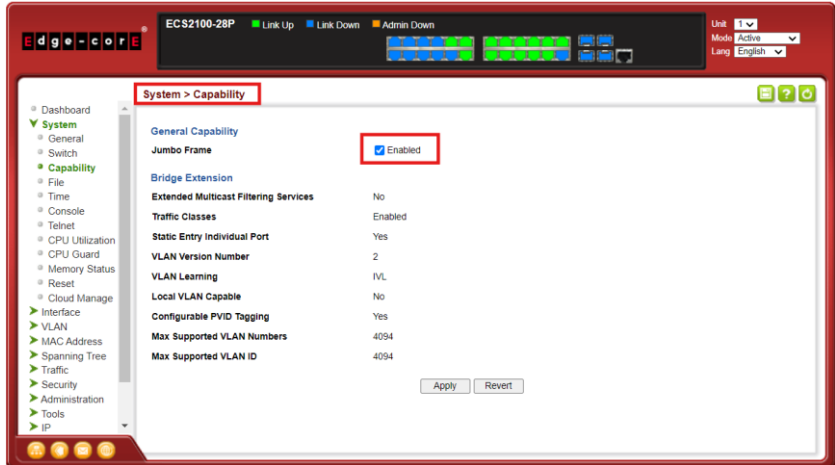
Default IP address: **192.168.2.10**

User: admin

Password: admin

Configuration Jumbo Frame

To Enable Jumbo Frame
Under “System”
Under “Capability”
Enable Jumbo Frame and Apply



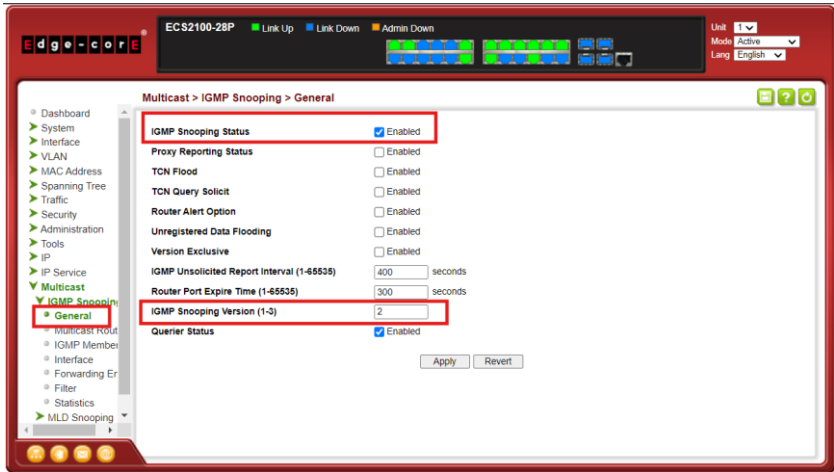
Configure IGMP Snooping

You can configure the parameters for IGMP snooping, which is used to build forwarding lists for multicast traffic.

Note:

You must log in as the admin user, which has read/write access privileges to change the data on this page.

To configuration IGMP Snooping
Under Multicast
Under IGMP Snooping
Under General
Enable below feature and Apply



Configure Vlan IGMP

To Configuration Vlan IGMP

Under Multicast

Under IGMP Snooping

Under Interface

Enable below feature and Apply

